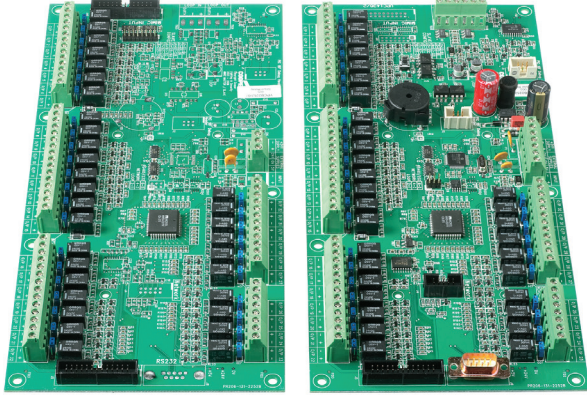


ZPCB2252-MML/MMR & ZPCB2252-MSL/MSR

Eaton's Cooper Mimic PCB



Code	ZPCB2252-MML/ZPCB2252-MMR ZPCB2252-MSL/ZPCB2252-MSR
Description	Mimic PCB
Specification	
Quiescent Current	310mA
Operating Loop Voltage	18V dc to 30V dc
Inputs	4mA to 20mA
External PSU	15V dc to 30V dc
Outputs	
Voltage	24V dc to 30V dc
Current	10mA
Environmental	
Humidity (Non Condensing)	0 to 95% RH
Physical	
Dimensions (H x W)	10mm x 290mm
Weight	0.25Kg
Compatibility	
Suitable for use with	Cooper Fire Systems

Loop powered installation

1. Connect the unit according to the diagram below
2. Recommended loop cable: FIRETUF / FP200 / MICC
3. Boards have built in isolators

Notes

If loop powered no addressing of the interface is required

1. Only connect cable screen to its adjacent earth terminal
2. 24V dc external power supply is required

Up to 250 outputs can be connected to the mimic PCB's. This offers more capability to the extensive options already offered by the CF3000 control panel.

The ZPCB2252-MML or ZPCB2252-MMR is the master PCB which can control up to 32 outputs. If further outputs are required ZPCB2252-MSL or ZPCB2252-MSR can daisy chain onto the master PCB offering a total outputs of 250.

Each slave can control up to 32 outputs.

The master board can be loop or network driven and does not require an external 1A 24V dc power supply.

The flexibility of these boards is further enhanced by the fact that each output can be programmed for fire or fault with up to 5 different zones or addresses per output.

This can be programmed using the CF3000 programmable repeater software and downloaded using the RS232 port.

These boards are typically used for geographical LED mimic displays.

Features & Benefits

- Available as master or slave, each has 32 outputs
- 250 outputs (1 master and 7 slaves)
- Ideal for mimic panel provision
- Each output can be programmed as fire or fault
- Each output can be operated by address, zone or panel activation
- 2 versions available:
 - LED
 - Relay output
- Soft addressed
- Built in short circuit isolation
- Simple configuration using Cooper site installer
- Easy to install

Catalogue numbers

Description	Code
Mimic LED PCB (master)	ZPCB2252-MML
Mimic Relay PCB (master)	ZPCB2252-MMR
Mimic LED PCB (slave)	ZPCB2252-MSL
Mimic Relay PCB (slave)	ZPCB2252-MSR